

Community Arts Extension

Class Catalog

Whitley County Extension Community Art Center
428 Main Street, Williamsburg KY 40769
606-549-7373

Facebook: [Whitleycountycooperativeextension-finearts](#)
YouTube: [Whitleycountyfinearts](#)



Martin-Gatton
College of Agriculture,
Food and Environment

LEARNING | SHARING | CREATING



Beginner Wood Carving

September 2023- February 2024



QR Code:
Facebook page



QR Code:
Community Arts
Web-Page



University of Kentucky
College of Agriculture,
Food and Environment
Cooperative Extension Service
Community Arts

Community Arts Upcoming Events

Pg. 3: A word from our Agent, Cortney Moses

Pg. 4: Basket Group

Pg. 5: Let's Go Hiking

Pg. 6: Artist Exhibit, Bethany's Hope

Pg. 7: Singing and Song Writing (6-12 yrs.)

Pg. 8: Simply the Best, Hoop Handle Basket

Pg. 9: Agriculture Photography

Pg. 10: Beginner Wood Carving

Pg. 11: Beginner Song Writing (13-17 yrs.)

Pg. 12: Mountain Textiles: Beginner
Cross Stitch

Pg. 13: Ceramic Trees

Pg. 14: Beginner Basket I

Pg. 15: Pumpkin Painting for Families

Pg. 16: Trick or Treat

Pg. 17: Singing and Songwriting (18 and up)

Pg. 18: Veterans Day

Pg.19: Holiday Ornament Napkinizing

Pg. 20: Gingerbread House Workshop

Pg. 21: Glass Enameling Jewelry, Beginner

Pg. 22: Mountain Textiles, Weaving

Pg. 23: Round Reed Double Wall Basket

Pg. 24: Whimsical Lilly Pads with
Palette Knives

Pg. 25: Belly Dancing

Pg. 26: Vinyl Record Mandalla

Pg. 27: Glass Enameling Jewelry,
Intermediate

Pg.28: Beginner Wheel Throwing I

Pg. 29: Caricature Drawing

Pg: 30: Beginner Wheel Throwing II

Pg. 31: Artificial Intelligence
for Artist

Pg 32. Volunteer Opportunity

Pg. 33: Six Month Recap:
Photos 33-41

Pg. 42: Building Photograph

Pg. 43-44 : Equal Opportunity
Statement & Staff
Contacts



A word from our Community Arts Agent
Cortney Moses



Greetings, Creative Community!

We are thrilled to unveil our Fall-Winter Catalog. It's been an incredible journey and we're here to share some remarkable updates that have taken our community engagement to new heights.

We are delighted to report the resounding success of WC Extension's new registration system, PACE. PACE has reformed the way we connect and interact, opened doors to fresh faces, and allowed us to reach wider audiences. A thank you goes out, your enthusiasm and patience have fueled our dedication to making our programs more accessible and inclusive.

But that's not all! We're absolutely thrilled to introduce a new addition to our team: a dedicated Staff Assistant for the Extension Community Arts Center. This expansion marks a significant step forward in enhancing the quality of service we offer to the public.

As we dive into this season, we encourage you to explore our diverse selection of classes, workshops, and events. From painting and pottery to dance and music, there's something for every creative soul. Thank you for being the heart and soul of our creative community. Together, let's continue to paint a vibrant tapestry of art, culture, and friendship.

Basket Group

Monthly Dates

Monday, September 11

Monday, October 2

Monday, November 6

Monday, January 8

Monday, February 5

Instructor: Master Basket Maker

Alice Fae Weiland

Meeting time: 10:00a.m. - 2:00p.m.

Do you have unfinished baskets, or would like to expand your knowledge of materials and tools? Master Basket Maker, Alice Fae, will

be available to assist you in completing unfinished baskets.

Group attendees can assist in cutting, preparing materials and tools, and ordering supplies to better understand basket arts.

This is not a basket class.

The purpose of this group is to preserve basketmaking knowledge within our community. This is a free group and is for basket enthusiasts of all levels. No experience needed.



Register at:
ukywhitley.pacecommunity.net

LET'S GO University of Kentucky

College of Agriculture,
Food and Environment

Hiking



University of
Kentucky
College of Agriculture,
Food and Environment

EXPLORE MOVEMENT AND NATURE WITH
YOUR HORTICULTURE & FINE ARTS AGENTS



All hikes will begin at the Whitley County Cooperative Extension Service, 4275 N HWY 25 W, Williamsburg KY 40769. We will carpool to the trail head. Pack a lunch and water. You are welcome to bring sketch pad or camera, etc. All ages welcome, hike at your own risk.



September-16 10:00am

Location: Princess Falls, Whitley City
Length: 2.9 miles- out and back
Difficulty: Easy
Lunch: Pack a lunch



October-21 8:00am

Location: Red River Gorge
Length: All Day trip |
Difficulty: Moderate
Lunch: Eat at Miguel's Pizza



November-17 10:00am

Location: Yahoo Falls, Whitley City
Length: 2.9 miles- out and back
Difficulty: Easy
Lunch: Pack a lunch



FREE
PLEASE
CALL TO
REGISTER
549-1430



CONTACT US: BEN.PREWITT@UKY.EDU OR
CORTNEY.MOSES@UKY.EDU

Register at:
ukywhitley.pacecommunity.net



September Multi- Artist Exhibition

Fearfully & Wonderfully Made



Exhibit Viewing Details

September 5 -September 29

Monday - Friday 8:00a.m.-4:30p.m

Saturday, September 9 11:00a.m.-6:00 p.m.

This is an art competition for Suicide Awareness and Prevention to assist in spreading the 988 crisis line #. It includes our very talented local youth, ages 13-18 or 7th-12th grades from local public, private, and home school groups. There will be a \$25, \$50, and \$100 cash prize for 1st, 2nd , and 3rd judged by the community. An overall winner will be selected by a panel of local artists. This piece will be exhibited on a billboard in the fall.

Support Your Artists!

Thursday September 7th

Stop by the art center, 428 Main Street, 8:00am-6pm to vote on your favorite art piece and get a ticket for a

FREE COFFEE/SMOOTHIE

From **The Coffee Spot** on Main Street,
Downtown Williamsburg.

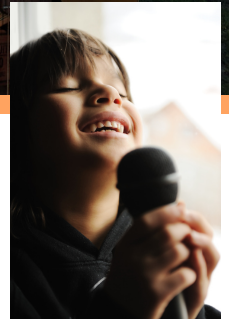
Voting available all month!

Singing and Song Writing

ages 6-12

Wednesday, September 13
5:30-7:00p.m.

- Registration opens: September 5
- Class limit: 15
- Artist fee: \$10.00
- Ages : 6-12
- Instructor: Olivia Immitt



Register at:
ukywhitley.pacecommunity.net

If you can speak then you can sing! Come learn how to set your singing voice free by learning simple techniques to control your vocal chords and diaphragm. In addition to the practical steps of singing you will also learn a shortcut to create your very own song. This class will encourage you to be more confident with sharing your singing voice in public. There is nothing more unique than your voice and the world needs to hear it!

Simply the Best

Hoop Handle Basket - Intermediate

Two part class
Sep. 19 from 5:30-8:00p.m
Sep. 26 from 5:00-8:00p.m.

- Registration opens: September 5
- Materials Fee: \$30.00
- Max Students: 10
- Ages: 16 and up
- Instructor: Master Basket Maker, Alice Fae Weiland

Register at:
ukywhitley.pacecommunity.net

This course is tailored for individuals who have successfully finished Beginner Basket 1 and 2 at the art center or have created 2 baskets before enrolling in this class. Attendees will gain an understanding of fundamental concepts in basket weaving, covering aspects such as materials, tools, essential construction methods, and procedures. The basket measures 16" x 8" x 12".



Agricultural Photography

Class Dates:

3 sessions

Pt. 1 - September 29

Pt. 2 - October 13

Pt. 3 - December 7

5:30-7:00p.m.

- Max students: 25
- Open to all ages (Youth under the age of 16, must be accompanied by an adult)
- Instructor: Laura Rogers, Kentucky State University
- Free

Registration opens:
September 5

Register at:
ukywhitley.pacecommunity.net

In this class, we will learn composition, photography rules and how to work with color.

We will also learn a process called Artistic Vision.

We have cameras for use. You can also use your phone for the class.



Beginner Wood Carving

Saturday
4 Week Program
September 30
October 7,14,21
10:00a.m.-3:00p.m.

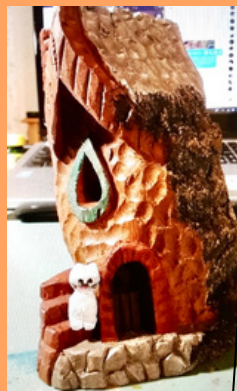
- Registration opens: Sept. 5
- Instructor: Phyllis Stone
- Please bring lunch.

- Max students: 8
- For ages: 16 and up
- (16 and 17 year olds, must be accompanied by an adult)
- Artist and Material Fee: \$30.00 (Fee includes knife and glove)
- There will be a small in-class fee for wood.

Register at:
ukywhitley.pacecommunity.net

Phyllis will teach safe carving practices, how to work with wood's natural grain, and knife skills. The course will begin with smaller projects and progress from there. Each student will take home a completed carving or something to work on independently. As a fellow woodcarving enthusiast, Phyllis looks forward to learning alongside her students and fostering a fun, collaborative learning space.

Phyllis Stone has been a woodcarver since 2003. She loves creating things from wood and cottonwood bark. Phyllis hopes that by teaching others to carve, the art of woodcarving will continue through time.



Singing and Songwriting

ages 13-17

Wednesday, October 11
5:30-7:00p.m.

- Max students: 15
- For ages: 13-17
- Registration opens: Sept. 29
- Artist Fee \$10.00
- Instructor: Olivia Immitt



If you can speak then you can sing! Come learn how to set your singing voice free by learning simple techniques to control your vocal chords and diaphragm. In addition to the practical steps of singing you will also learn a shortcut to create your very own song. This class will encourage you to be more confident with sharing your singing voice in public. There is nothing more unique than your voice and the world needs to hear it!



Mountain Textiles Class

Beginner Cross Stitch

Monday, October 16
5:30-8:00p.m.

Registration Opens:
September 29

- Max students: 12
- Ages 12 and up
- Instructor: Sharlene Dzugan
- Material Fee: \$8 (Cross Stitch Kit)

Embark on a creative journey with our Beginner Cross Stitch Class. This comprehensive workshop is tailored for newcomers, offering step-by-step basic techniques, counted vs. stamped. Discover the joy of transforming colorful threads and simple stitches into intricate designs, and creating personalized keepsakes.



Register at:
ukywhitley.pacecommunity.net

Ceramic Trees

3 sessions:
October 17, 18
November 16
5:00-8:00p.m.

- Registration opens:
September, 29

- Max students: 8
- All Levels
- Materials Fee: \$15
- Instructor:
Cortney Moses

In this class, you'll learn the fundamentals of hand-building techniques using clay, allowing you to shape, mold, and carve your trees to perfection. You will have the opportunity to customize it with intricate textures, patterns, and decorations.

Let your imagination run wild and create a magical centerpiece that embodies the joy of the holidays.



Beginner Basket I

2 sessions:
October 24
November 15
10:00am-2:00pm

- Registration opens: September 29
- Material Fee: \$20.00
- Beginner Class: This class is for first time basket makers
- Max students: 6
- For ages: 16 and up
- Instructor: Master Basket Maker, Alice Fae Weiland

This class is designed for participants who are new to basketmaking. Participants will become familiar with beginning basket concepts, including: materials, tools, basic construction techniques, and procedures. Students will create this beautiful bread basket.

Register at:
ukywhitley.pacecommunity.net



Pumpkin Painting for Families



- Friday, October 27 •
- 5:30-8:00p.m. •



Registration opens: September 29

Join us for pumpkin painting, fun for the entire family.
Bring your favorite pumpkin!
It can be any size and color, we will furnish the paint,
brushes, and exciting ideas!
This is a free event and open to everyone.



Register at:
ukywhitley.pacecommunity.net



We are collaborating with K.S.U. and 4-H.
K.S.U. will serve a smoothie, pumpkin bread,
and provide an educational bat activity.

Trick or Treat



- Tuesday, October 31 •
- 5:30p.m. •

Join us as we celebrate Halloween in downtown Williamsburg! We have Play-Doh and other goodies to give-away!

For more information contact us!

Location: Extension Community Art Center
428 Main Street,
Williamsburg



Singing and Songwriting

Adults ages 18 and up

Wednesday
November 8
5:30p.m.-7:30p.m.

- Registration opens: October 27
- Max Students: 15
- Ages: Adult
- Artist Fee: \$10.00
- Instructor: Oliva Immitt

If you can speak then you can sing!

Come learn how to set your singing voice free by learning simple techniques to control your vocal chords and diaphragm. In addition to the practical steps of singing you will also learn a shortcut to create your very own song. This class will encourage you to be more confident with sharing your singing voice in public. There is nothing more unique than your voice and the world needs to hear it!



Whitley County
Cooperative Extension
Presents:



Annual Veterans Day Dinner

Friday, November 10

- 5:30p.m.-7:30p.m.
- Registration opens:
October 10

To register call 606-549-1430.
Please RSVP with the total
number of guests in your party.

Location: Goldbug Office
4275 U.S. 25W N,
Williamsburg, KY 40769

Join us as we celebrate our Veterans with a free chili dinner,
dessert and drinks.

Veterans and their families are invited to attend.



Holiday Ornament Napkinizing

Tuesday, November 14
5:30p.m.-7:30p.m.


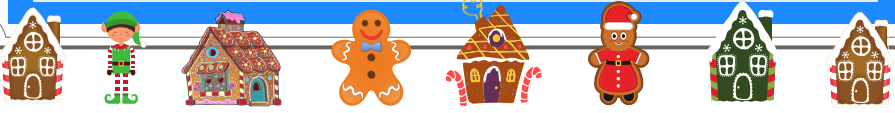
- Registration opens:
October 27

- Max students: 22
- For ages: 12 and up
- Artist and Materials
Fee: \$15.00
- Instructor: Kathy Lay



The holiday season is approaching, which means the arrival of ornaments for both gifts and your tree. Discover the art of utilizing ornamental napkins to craft exquisite wooden ornaments through the application of mod podge, Posca pens, and personal expression.

Gingerbread House Workshop



Friday, December 1
5:30p.m.-8:00p.m.

- Registration opens:
November 24
- Class limit: 22
- Open to all ages
- Free

Supplies to bring (per person)

- Small Box (One per person)
This will be used to build
your house around.
Example boxes: Pop Tart,
oatmeal and Kleenex
- 1-2 Containers of vanilla
frosting per person
(NOT WHIPPED)

"In this workshop, you'll craft your gingerbread house using a box as the base, letting your creativity shine. We've got some great ideas and tips to help you out. It's a perfect activity for family and friends to enjoy together."



*We will have a selection of
candy to choose from at the
event.*

*"If you want your favorite
candy, feel free to bring
your own"*

We are collaborating
with K.S U. and 4-H.
K.S.U. will demo a hot
chocolate drink for the
holidays.

4-H will have an
exciting holiday activity.

Glass Enameling Jewelry

for Beginners

Saturday, January 13
9:00a.m.-4:00p.m.

Registration opens:
December 29

- Max students: 4
- For ages: 18 and up
- Materials Fee: \$25.00
- Instructor: Mawnie Belcher



Register at:
ukywhitley.pacecommunity.net

Participants will gain hands-on experience in the art of enameling, from safety and color selection to kiln and torch firing, as well as gradient effects and enamel stenciling. Enameling involves fusing powdered glass to a metal surface, resulting in a stunning glossy finish. With multiple firings, each piece is meticulously crafted to perfection. Attendees will have the opportunity to create their own unique enameled jewelry, and leave with two beautiful completed pieces.

Mountain Textiles Class

Weaving

January 15
5:30-8:00p.m.

Registration opens:
December 29

- Max students: 8
- For ages: 13 and up
- Materials Fee: \$5.00
- Instructor:
Cortney Moses

In this beginner class students will learn six fundamental weaving stitches that form the building blocks of this art form. From the classic plain weave to the intricate braided soumak, you'll gain hands-on experience. You may bring your own loom or purchase a small one at the class. No prior experience required – just a willingness to explore and create!



Round Reed - Double Wall Basket

Tuesday, January 16
10:00a.m.-2:00p.m.

- Registration opens:
- December 29, 2023
- Materials Fee: \$15.00
- For ages: 16 and up
- All levels
- Max participants: 10
- Instructor: Master Basket Makers, Alice Fae Weiland and A.J. Henry

Register at:
ukywhitley.pacecommunity.net



In this basket program, participants will learn basket materials, tool and basic construction techniques.

This basket is constructed of round reed and measures
Approximately 6" w x 4" h.
Colors will vary.

Whimsical Lilly Pads

Using Acrylic Paint & Palette Knife

Friday, January 26
5:30p.m.-8:00p.m.

- Registration opens:
December 29

- Max students: 20
- For ages: 13 and up
- Artist and Materials
Fee: \$25
- Instructor: Kathy Lay



In this workshop, you'll be crafting a charming dragonfly and lily pads using acrylic paints. The technique involves employing palette knives and even our own fingers to skillfully blend and capture the water's fluidity. For the final touches, we'll utilize Posca pens to add intricate details. The primary goal of this class is to enjoy the process and maintain a positive attitude, resulting in a stunning and serene piece of artwork ready to adorn your wall.

Belly Dancing

- 4 session, Thursday
- Dates: February 8, 15, 22, 29
- Time: 6:00p.m.-7:30p.m.

Registration opens:
January 26

- Max students:15
- For ages: 16 and up
- Artist Fee: \$10.00 for a set of 4 classes.
- Instructor: Dyan Fairbanks



- **Wear loose, comfortable clothing**
- **Don't not eat a full meal before class**
- **Information on purchasing belly dancing belts will be discussed at the first class.**

Engaging in belly dancing is an excellent method for maintaining fitness, enhancing agility, and boosting self-assurance. It fosters balance, physical power, digestion, and harmonized movements. These advantages are coupled with a sense of femininity and enjoyment. Participants will have the option to acquire music CDs. Additionally, we will provide online video references for both costume guidance and practice sessions.

Vinyl Record Mandalla

Friday, February 9
Time: 5:30p.m. -7:30p.m.

Registration opens: January 26

- Max students:15
- For ages: 12 and up
- Materials Fee: \$7.00
- Instructor:
Andrea Munoz



In this hands-on class, you will learn to transform ordinary vinyl records into stunning pieces of mandala art. Our experienced instructor will guide you through the step-by-step process, providing demonstrations and personalized guidance to ensure you create a masterpiece that resonates with your artistic vision.

Unleash your creativity as you join our Vinyl Record Mandalla program.

Glass Enameling Jewelry Intermediate

2 sessions

Saturday, February 10

Saturday, March 2

9:00a.m.-4:00p.m.

Registration opens: Jan. 26

- Max students: 5
- For ages: 18 and up
- Materials Fee: \$35.00
- Instructor: Mawnie Belcher
- Participants must have completed the Glass Enameling for beginners to register for this program.



Participants will review the process of enameling including: safety, choosing colors, kiln firing, torch firing, gradient effect and enamel stenciling. Students will learn new styles of enameling including rake and beginner cloisonné. Students will also have time to perfect the beginner techniques .

Enameling is the process of fusing glass to metal. Powdered glass is applied to a metal surface, then fired at 1450 degrees in the kiln. Each piece will go through multiple firings to create a beautiful, glossy finish. Participants will leave with at least 2 pieces of enameled jewelry.

Extension Pottery Studio Beginner Wheel-Throwing I Morning Session

7 sessions

Class Dates:

Tuesday, February 13, 20, 27

March 5, 12, 19

April 2

- Max students: 4
- For ages: 15 and up
- Instructor:
Cortney Moses
- Materials Fee: \$45.00
For 7 classes

10:00a.m.-12:00p.m.

Registration opens:

January 26

Register at:

ukywhitley.pacecommunity.net

In this class, students will be introduced to basic wheel throwing techniques. Through demonstrations and hands on learning, each class will build off the previous one to help participants gain confidence in using clay on the potter's wheel. Participants will learn basic studio functions, tools, centering clay, creating cylinder forms, and trimming.



Caricature Drawing

Date: February 24
Time: 2:00p.m.-4:00p.m.

Registration opens: January 26

- Max students: 15
- For ages: 10 and up
- Materials Fee: \$5.00
- Instructor:
Dyan Fairbanks



Caricature sketching involves creating uncomplicated depictions of individuals and animals, utilizing either pencils or markers. These drawings are amusing and engaging, brought to life through slight exaggerations. Worksheets will be supplied to aid in this artistic process.

Extension Pottery Studio

Beginner Wheel Throwing II

Evening Session

7 sessions

Class Dates:

February 29,
March 7, 14, 19,
April 4, 11, 18

5:00-7:00p.m.

Registration opens:
January 26

- Max students: 4
- Must have taken Beginner Wheel Throwing I with Cortney
- Instructor: Cortney Moses
- Class Fee: \$45.00

Register at:

ukywhitley.pacecommunity.net

This class is for students that have taken Wheel Throwing Beginner Part 1 with Cortney Moses. In this class students will continue to practice wheel throwing techniques. Through demonstrations and hands on learning, each class will build off the previous one to help participants gain confidence in using clay on the potter's wheel. Students will experiment with different techniques and develop their style.



Artificial Intelligence for Artists: Unleashing Creativity with Technology

Monday, February 26
Time: 6:00-6:45pm

Registration opens:
January 26

- Max students:30
- For ages: All
- Program Fee: Free
- Instructor:
Lois McWhorter



Lois is the Chair of the Hutton School of Business at the University of the Cumberlands. Her areas of particular interest include teaching and professional learning, career, and professional development, diversity and inclusion, international education, and community outreach.

Discover the intersection of art and technology in this class, "Artificial Intelligence for Artists." This course is designed to empower artists of all backgrounds and levels to harness the power of AI to enhance their creative processes and take their work to new heights.

In this class, you will delve into artificial intelligence, exploring how AI algorithms can be innovative tools for artists. Whether you're a painter, photographer, musician, or any other artist, you'll learn how AI can inspire and augment your artistic endeavors.

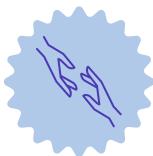
Volunteers Needed

Possible volunteer duties:

- Preparing for events
- Putting together Take-Home Art Packets
- Organizing art supplies
- Painting
- Pottery Studio maintenance
- Much more!

Participants must be self motivated and EXCITED to volunteer.

Call 606-549-7373 or email Cortney.moses@uky.edu or Mawnie.Belcher@uky.edu for an application.



Are you interested in volunteering with Community Arts Extension in Whitley County? This is an excellent chance to be part of a vibrant and artistic community. As a volunteer, you can accumulate "Art Bucks" which can be redeemed for classes at Community Arts Extension. Additionally, you can earn credit hours for your affiliated institution or organization."



6-month Recap

Basket Workshops



Yoga



Century 21



Mountain Textiles



Pottery



Senior Instructors



Artists Exhibition

Melanie McFarland and Christian Mansfield



Earth Day



Enameling Jewelry



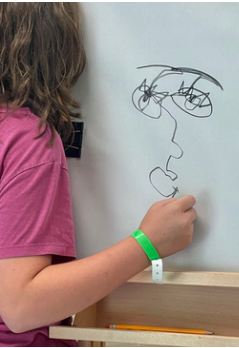
Farm Field Day



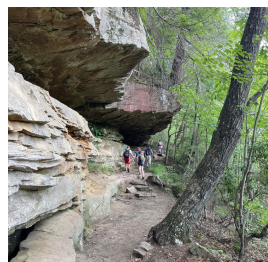
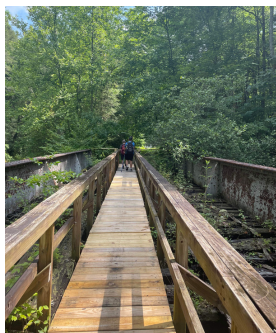
Farmers Market



4-H and Cloverbud Camp



Let's Go Hiking



Pressed Flowers



Wood Carving



School Collaborations

Funny Faces with Mike



Fabric Journals & Ornaments

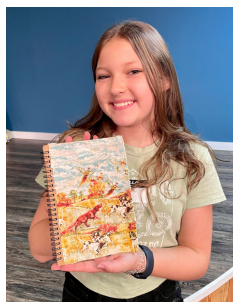




photo courtesy of m.c. mckinney, photographer

UK **Martin-Gatton**
College of Agriculture,
Food and Environment



KENTUCKY STATE UNIVERSITY
College of Agriculture,
Community, and the Sciences



The College of Agriculture, Food and Environment is an Equal Opportunity Organization with respect to education and employment and authorization to provide research, education information and other services only to individuals and institutions that function without regard to economic or social status and will not discriminate on the bases of race, color, ethnic origin, creed, religion, political belief, sex, sexual orientation, gender identity, gender expression, pregnancy, marital status, genetic information, age, veteran status, or physical or mental disability. Inquiries regarding compliance with Title VI and Title VII of the Civil Rights Act of 1964, Title IX of the Educational Amendments, Section 504 of the Rehabilitation Act and other related matter should be directed to Equal Opportunity Office, College of Agriculture, Food and Environment, University of Kentucky, Room S-105, Agriculture Science Building, North Lexington, Kentucky 40546, the UK Office of Institutional Equity and Equal Opportunity, 13 Main Building, University of Kentucky, Lexington, KY 40506-0032 or US Department of Agriculture, Office of the Assistant Secretary for Civil Rights, 1400 Independence Avenue, SW, Washington, D.C. 20250-9410.

Don't forget about our many services at our Goldbug location!

Whitley County Extension Office
4275 US-25W, Williamsburg, KY 40769
606-549-1430

Family and Consumer Sciences

Agent, Linda Burgard: Linda.burgard@uky.edu
FCS Program Assistant, Reagan Weedman: Reagan.weedman@uky.edu

4-H Youth Development

Agent, Lisa Spaulding-Jones: lisa.jones@uky.edu
4-H Program Assistant, Brittany Browning: Brittany.browning@uky.edu

Agriculture and Natural Resources

Agent, Stacy White: sjwhite@email.uky.edu
Agricultural Program Assistant, Andrew Modica: Andrew.modica@uky.edu

Horticulture

Agent, Ben Prewitt: Ben.prewitt@uky.edu
Horticultural Program Assistant, Andrew Modica: Andrew.modica@uky.edu

Expanded Food and Nutrition Education Program (EFNEP)

Program Assistant, Cheryl Owens: cheryl.owens@uky.edu

Staff Assistant

Tina Noe, Tina.noe@uky.edu

Staff Assistant

Rebecca Meadows, Rebecca.Meadows@uky.edu

Maintenance/Custodian

Nathan Russel, Billy.Russell@uky.edu

All Classes, unless listed otherwise, will be held at:
Whitley County Extension Community Art Center,
428 Main Street
Williamsburg, Kentucky 40769
606-549-7373



Like us on Facebook at
www.facebook.com/Whitleycountycooperativeextension-finearts

Extension Community Art Center

Community Arts Extension Agent
Cortney.moses@uky.edu



Cortney Moses

Community Arts Program Assistant
Mawnie.belcher@uky.edu



Mawnie Belcher

Kentucky State University

Small Farms Area Agent
Laura.rogers@kysu.edu



Laura Rodger

Sustainable Agriculture
and Nutrition Ed Assistant
Andrea.munoz@kysu.edu



Andrea Munoz