

# Community Arts Extension

Whitley County Extension Community Art Center  
428 Main Street, Williamsburg KY 40769  
606-549-7373

Facebook: Whitleycountycooperativeextension-finearts  
YouTube-Whitleycountyfinearts

COOPERATIVE EXTENSION



University of  
Kentucky  
College of Agriculture,  
Food and Environment



LEARNING | SHARING | CREATING

September 2022- February 2023



Beginning Wheel Throwing

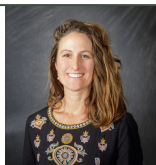
## Earth Day



## Artist Reception- Michael Hall



## Copper Forging



Cortney Moses  
Whitley County Cooperative Extension  
Extension Community Arts Agent  
Office-606-549-7373  
Email: Cortney.moses@uky.edu



Mawnie Belcher  
Whitley County Cooperative Extension  
Community Arts Program Assistant  
Office-606-549-7373  
Email: Mawnie.belcher@uky.edu

QR Code:  
Facebook page



QR Code:  
Community Arts  
Web-Page



University of Kentucky  
College of Agriculture,  
Food and Environment  
Cooperative Extension Service  
Community Arts

# Community Arts Upcoming Events

- Pg. 2: Upcoming Events
- Pg. 3: A word from our Agent, Cortney Moses
- Pg. 4: Basket Group
- Pg. 5: Mountain Textiles Group
- Pg. 6 & 7: Artist Exhibit and Reception
- Pg. 8: Old Fashioned Trading Days
- Pg. 9: Beginner 2, Basket Workshop
- Pg. 10: Wood Carving Workshop
- Pg. 11: Bees Wax Lip Balm
- Pg. 12: Hiking
- Pg. 13: Watercolor Basic Series
- Pg. 14: Beginner Wheel Throwing (Evening)
- Pg. 15: Beginner Wheel Throwing (Morning)
- Pg. 16: Cherokee Basket Workshop
- Pg. 17: Autumn Highlander Painting Workshop
- Pg. 18 & 19: Pumpkin Decorating Contest
- Pg. 20: Trick or Treat
- Pg. 21: Soap Making with Natural Ingredients
- Pg. 22: Veterans Day Celebration
- Pg. 23: Gingerbread House Workshop
- Pg. 24: Glass Enameling Series and Jewelry Sawing
- Pg. 25: Winter Angel Painting Workshop
- Pg. 26: Cathead Basket Workshop
- Pg. 27- 34: Six Month Recap, Photos
- Pg. 35: Arts in Community Series
  - Advancing the Creative Economy
- Pg. 36 : CEDIK Arts Engagement Resources
- Pg. 37 : Equal Opportunity Statement
- Pg. 38: Staff Contacts



A word from our Community Arts Agent  
Cortney Moses



Greetings! We are excited to share another round of quality arts experiences. We have been working with talented, local artists from different arts backgrounds. This season will be filled with creative opportunities and community engagement.

One major announcement to share is our name change from Fine Arts to Community Arts. Fine Arts Extension was created in 2005. Since then, community arts development at the national level has inspired other states to develop Arts Extension programs as well. Shifting our name to Community Arts better reflects our program in Whitley County. These changes give us more resources at the state level and increased access to arts programming.

This name also reflects our growth: we are adding Community Arts programs in new Kentucky counties! With Agents in Whitley, Pike, and Greenup and Program Assistants in Whitley, Pike, Wayne, McCracken, Boone, and Bullitt, UK Extension is expanding access to quality arts engagement across Kentucky.

# Basket Group

## Monthly Dates

Monday, September 12

Monday, October 3

Monday, November 7

Monday, January 9

Monday, February 6

Instructor, Alice Fae Weiland

Meeting time: 10:00am- 2:00pm



Do you have unfinished baskets, or would like to expand your knowledge of materials and tools? Alice Fae, basket instructor, will be available to assist you in completing unfinished baskets. Group attendees can assist in cutting and preparing materials and tools and ordering supplies to better understand basket arts.

This is not a basket class.

The purpose of this group is to preserve basketmaking knowledge within our community. This is a free group and is for basket enthusiasts of all levels. No experience needed.

- Registration for Basket Group opens one month prior to class date.
- Call 549-7373 or Facebook Messenger: [Whitleycountycooperative extension-finearts](https://www.facebook.com/Whitleycountycooperativeextension-finearts)

# Mountain Textiles Work Group

## Monthly Textile Themes

Monday, September 19:

Embellishments

Monday, October 17:

Mono Printing

Monday, November 14:

Cross-stitch

Monday, January 23:

SilkScreen Printing

Monday, February 20:

Weaving

Meeting time: 5:30p.m.-8:00p.m.

Participants will advance their knowledge by experimenting with new textile mediums while communing and sharing knowledge.

The purpose of this group is to provide support for textile artists as well as expand opportunities to new artists through an artist support group. It is free to join and is for new as well as experienced textile enthusiasts.

Textile arts is the art of using plant, animal, or synthetic fibers to construct practical or attractive objects.



- Registration opens one month prior to class date.
- For questions call 549-7373 or Facebook Messenger: [Whitleycountycooperativeextension-finearts](https://www.facebook.com/Whitleycountycooperativeextension-finearts)

# September Artist Exhibition

## Kellene Turner



Featuring an airy atmospheric perspective



Kellene Turner  
Fine Artist

Medium:  
ACRYLIC MIXED MEDIA

Artist Statement:  
Works and areas of  
artistic study can be  
described as:  
Varied expressive  
manipulation of medium  
to portray progressive  
hypnotic schemes of  
color that infiltrate  
atmospheric  
perspectives and  
dejected scapes.



# September Artist Exhibition

## Kellene Turner

### About the Artist:

Kellene Turner has practiced fine arts for over 30 years. In the last decade she surrounded herself with a local Fine Arts movement and truly found an encouraging direction of artistic and personal style. Art can be a powerful impact or subtle transformation to a place. Changing and growing with new experiences, and learning through experimenting are the best influences in spurring creativity in her studio. Her life's work is abundantly inspired by travel, people, nature and natural forms. When painting she lets the medium take on a life of its own and manipulates its limits.

Time creating is truly raw and a personal experience. This ability brings Kellene great joy and even more so that she can share it with others. Works that are on display are created in multiple sitting of timely layers and thoughtful palettes.

### Exhibit Viewing Details

September 1 -September 30, daily 8:00a.m.-4:30p.m

### Artist Reception

Saturday, September 17 from 6:00p.m.-8:00p.m.

Meet the artist and enjoy light refreshments.

# Old Fashioned Trading Days

September 8 & 9

Free  
Open to all ages

Call 549-7373 or  
Facebook Messenger:  
[whitleycountycooperative](#)  
[extension-finearts](#) for  
more information.

Join us at the Extension Community Arts booth  
as we create a community string art wall hanging!  
Jump-in and create with us!





# Beginner Basket II

September 20 & 27  
(Two part class)

- 5:00-8:00p.m
- Registration opens September 1
- Class Fee: \$20.00
- Beginner Class II - Participants may be new or have previously taken one class.
- Instructor: Alice Fae Weiland

- Call 549-7373 or Facebook Messenger: [whitleycountycooperativeextensionfinearts](https://www.facebook.com/whitleycountycooperativeextensionfinearts) to register.
- Max students:5
- For ages: 16 and up

This class is designed for participants who have completed the beginner berry basket class or are new to basketmaking. Participants will become familiar with beginning basket concepts, including: materials, tools, basic construction techniques, and procedures. Students will create this beautiful bread basket.



# Wood Carving

- Saturday, September 10
- Time: 9:00a.m.-5:00p.m.
- Registration opens: August 22
- Class fee: \$ 45.00
- Instructor: Duane Baysinger

- Call 549-7373 or Facebook Messenger: [whitleycountycooperativeextension-finearts](#) to register.
- Max students: 6
- For ages: 16 and up
- Skill level: Beginner



In this class students will learn safety, sharpening, stropping, how wood grows and practice carving.

Students will work to complete an 8x8 maple leaf carving.

Visitors that are attending Old Fashioned Trading Days may walk through the class to see the wood carving process.

# Bees Wax Lip Balm

Friday, September 23

- Time: 5:30-6:30p.m.
- Registration opens:  
August 23
- Class fee: Free
- Instructor: Laura Rogers  
KSU Small Farm Area Agent

- Call 549-7373 or  
Facebook Messenger:  
[whitleycountycooperative  
extension-finearts](https://www.facebook.com/whitleycountycooperativeextensionfinearts) to  
register.
- All Ages



Most people think about honeybees producing honey. But, is that the only thing produced from the hive?

Learn how to make your own lip balm from beeswax.

Participants will go home with 1-2 lip balms and the knowledge to create their own.

LET'S GO



University of Kentucky

College of Agriculture, Food and Environment



# Hiking

EXPLORE MOVEMENT AND NATURE WITH YOUR HORTICULTURE & FINE ARTS AGENTS



All hikes will begin at the Whitley County Cooperative Extension Service, 4275 N HWY 25 W, Williamsburg KY 40769. We will carpool to the trail head. Pack a lunch and water. You are welcome to bring sketch pad or camera, etc..

All ages welcome, hike at your own risk.



## September-28. 8:00am

Location: Sand Cave and White Rocks- Cumberland Gap  
 Length: All Day Trip- 8.3 mile loop  
 Difficulty: Hard  
 Lunch: Pack a lunch



## October-21 7:00am

Location: Auxier Ridge Loop- Red River Gorge  
 Length: All Day trip- 7 mile trail  
 Difficulty: Moderate  
 Lunch: Eat at Miguel's Pizza



## November-22 9:00am

Location: Princess Falls- Whitley City  
 Length: 2.9 miles- out and back  
 Difficulty: Easy  
 Lunch: Pack a lunch

**FREE**  
 PLEASE  
 CALL TO  
 REGISTER  
 549-1430



**CONTACT US:** BEN.PREWITT@UKY.EDU OR CORTNEY.MOSES@UKY.EDU

# Watercolor Basic Series

## 3 part Series

October 4, 5:30-7:00p.m.  
101 Watercolors

November 8, 5:30-7:00p.m.  
Using the knowledge from the previous class, we will create a botanical inspired painting.

December 6, 5:30-7:00p.m.  
Creating a series of 4 holiday cards or bookmarks.

- Call 549-7373 or Facebook Messenger: [whitleycountycooperativeextension-finearts](https://www.facebook.com/whitleycountycooperativeextension-finearts) to register.
- Max students:10
- For ages: 16 and up
- Registration opens Sept. 12
- Class Fee:\$5.00 per class
- Instructor: Andrea Munoz

Bio: Andrea is a watercolor artist. She uses this art medium for personal growth and recording events in her journals. She lives in Rockholds, KY.

Participants will learn basic watercolor techniques that will allow them to start a daily sketching practice or develop a special piece of art.



# Extension Pottery Studio

## Beginner Wheel-Throwing

### Evening Session

#### Class Dates:

5 weeks

Tuesday, October 4, 11, 18, 25

5:00-7:00p.m.

#### Glazing Date:

Thursday, November 10,

10:00a.m.-12:00p.m. or

5:00p.m.-7:00p.m.

Instructor: Cortney Moses

- Call 549-7373 or Facebook Messenger: [whitleycountycooperative/extension-finearts](https://www.facebook.com/whitleycountycooperative/extension-finearts) to register.
- Max students: 4
- For ages: 15 and up
- Registration opens September 12
- Class Fee: \$40.00 for 5 classes

In this class, students will be introduced to basic wheel throwing techniques. Through demonstrations and hands on learning, each class will build off the previous one to help participants gain confidence in using clay on the potter's wheel. Participants will learn basic studio functions, tools, centering clay, creating cylinder form, and trimming.



# Extension Pottery Studio

## Beginner Wheel-Throwing

### Morning Session

• **Class Dates:** •

**5 weeks**

**Thursday, October 6, 13, 20, 27**

**10:00a.m.-12:00p.m.**

**Glazing Date:**

**Thursday, November 10,**

**10:00a.m.-12:00p.m. or**

**5:00p.m.-7:00p.m.**

• **Instructor: Cortney Moses** •

- Call 549-7373 or Facebook Messenger: [whitleycountycooperativeextension-finearts](https://www.facebook.com/whitleycountycooperativeextension-finearts) to register.
- Max students: 4
- For ages: 15 and up
- Registration opens Sept. 12
- Class Fee: \$40.00  
For 5 classes

In this class, students will be introduced to basic wheel throwing techniques. Through demonstrations and hands on learning, each class will build off the previous one to help participants gain confidence in using clay on the potter's wheel. Participants will learn basic studio functions, tools, centering clay, creating cylinder forms, and trimming.



# Cherokee Basket

- October 12 & 19
- (Two part class)
- 10:00a.m.-2:00p.m
- Registration opens September 12
- Class Fee: \$25.00
- Intermediate Class - Participants must have taken a previous basket class.
- Instructor: Alice Fae Weiland

- Call 549-7373 or Facebook Messenger: [whitleycountycooperativeextension-finearts](https://www.facebook.com/whitleycountycooperativeextension-finearts) to register.
- Max students: 10
- For ages: 16 and up

In this basket class, participants will learn basket materials, tool and basic construction techniques.

The patterns and color combinations of this useful basket are endless.

Our pattern will be woven in the traditional Cherokee style. The basket measures 13"X13".





# Autumn Highlander

## Using Acrylic Paint & Palette Knife

Friday, October 14

- 5:30p.m.-8:30p.m.
- Registration opens  
September 26
- Class Fee: \$5.00
- Instructor: Kathy Lay

- Call 549-7373 or  
Facebook Messenger:  
[whitleycountycooperative  
extension-finearts](https://www.facebook.com/whitleycountycooperativeextension-finearts) to  
register.
- Max students: 20
- For ages: 13 and up

In this workshop, participants will complete a beautiful highlander with fall décor in acrylic paint on canvas. They will also learn how to blend and spread colors using a palette knife. Participants will learn how to mix colors and basic drawing techniques.



# Pumpkin Decorating Contest



## Pumpkin Drop Off

Thursday, October 27th - 8:00a.m.-5:30p.m.

Location: Extension Community Art Center  
428 Main Street, Williamsburg, Ky  
606-549-7373

## Voting

Friday, October 28th - 8:00-a.m.-6:00p.m.

Monday, October 31st - Display Only

Winners Announced after 12:00p.m.

Pumpkins will be on display during  
Williamsburg's Trick-or-Treat

## Age Groups

0-5

6-12

13-18

Adult

### For more information:

- Call 549-7373 or  
Facebook Messenger:  
[whitleycountycooperative  
extension-finearts](https://www.facebook.com/whitleycountycooperativeextension-finearts) to  
register.

Each age  
group  
winner will  
receive a  
Ribbon and  
Art Prize!

Sponsored by the  
Whitley County Extension  
Community  
Art Center & 4-H

Specific guidelines  
are listed on the next  
page.

# Pumpkin Decorating Guidelines

- Age Categories  
Child (0-5), Youth (6-12), Teen (13-18), Adult
- Pumpkins size is optional (Participants will provide their own pumpkin).
- Pumpkins can be decorated or carved.
- Name Card: Write your name, parent's name (if youth), phone number, and age category on an index card or heavy paper and attach it to the pumpkin. Use a push pin or heavy tape to attach. Make sure the name card can be moved to the bottom of the pumpkin during voting.
- Optional: Participants may attach a story card or picture, that goes along with their pumpkin.
- Each age group winner will receive an awesome ART PRIZE AND A RIBBON!!!!



# Trick or Treat

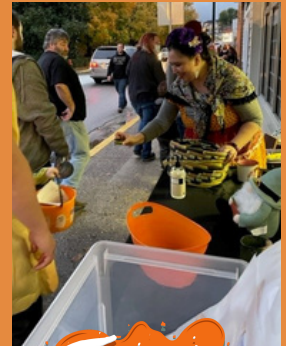


- Monday, October 31
- 5:30p.m.

Join us as we celebrate Halloween with downtown Williamsburg! We have Play-Doh and other goodies to give-away!

For more information call:  
Call 549-7373 or  
Facebook Messenger:  
[whitleycountycooperative  
extension-finearts](https://www.facebook.com/whitleycountycooperativeextension-finearts)

Location: Extension Community  
Art Center  
428 Main Street, Williamsburg



# Soap Making with Natural Ingredients

Thursday, February 23

- Time: 5:30-6:30p.m.
- Registration opens: October 4
- Class fee: Free
- Instructor: Laura Rogers  
KSU Small Farm  
Area Agent

- Call 549-7373 or Facebook Messenger: [whitleycountycooperativeextension-finearts](https://www.facebook.com/whitleycountycooperativeextension-finearts) to for assistance.
- All Ages

Register at:  
[ukywhitley.pacecommunity.net](http://ukywhitley.pacecommunity.net)



In this class, we will use goat milk or honey base to create a natural soap. Each participant will leave with a bar of soap. Participants will learn basic soap making techniques.

# Veteran's Day Celebration



• **Friday, November 11** •

- 5:30p.m.-7:30p.m.
- Registration opens  
October 17

- Call 606-549-1430 to register. Please communicate the total number of guest coming in your party.

**Join us as we celebrate our Veterans with a free chili dinner, dessert and drinks.**

**Veterans and their families are invited to attend.**

## Guest Speaker

Judge Dan Ballou was born Nov 15th, in Knoxville, TN and raised in Williamsburg, KY. He graduated from Williamsburg High School on June 1st, 1984 and left for the Marine Corps Recruit Depot Parris Island on June 4th 1984. Judge Ballou served for seven years on active duty and was honorably discharged as a Sergeant in December 1991. Judge Ballou retired from the United States Marine Corps Reserve as a Major in 2015. During his military career he deployed overseas with various units on six occasions including Desert Shield and Desert Storm 1990-1991, Afghanistan 2003, and Iraq 2008.

Upon leaving active duty in late 1991, Judge Ballou entered college. He graduated from the University of Kentucky in 1995 with a BA in political science and earned his law degree from the University of Mississippi in December 1998.

# Gingerbread House Workshop



• **Saturday, December 10** •

- 10:00a.m.-12:30p.m.
- Registration opens November 14
- Free
- Open to all ages

Call 549-7373 or Facebook Messenger: [whitleycountycooperative](#) [extension-finearts](#) to register.



In this workshop, participants will build their structure from the ground up creating a unique and artistic gingerbread house. We will have fantastic ideas and hacks to share. This is a wonderful event to share with family and friends.

## Supplies to bring (per person)

- Box to build around. (Pop tarts, oatmeal and Kleenex work great)
- 1-2 Containers of vanilla frosting per person(NOT WHIPPED)

We will have a selection of candy to choose from at the event. If you'd like your own special decoration, these are examples to bring. (Cereal, marshmallows, coconut, pretzels, spray icing, gum drops, cinnamon candy, peppermint sticks, sprinkles, red hots, M & M's, dried fruit, marshmallows, lollipops, ice cream cones, wafer cookies, fruit leather &candy canes.)



# Glass Enameling Series

This is a 4 part series  
5:30-8:00p.m.

February 17: Introduction to Enameling: Safety, choosing colors, using the kiln & firing your first piece.

February 24: Techniques Gradient effect, stenciling, wet packing, painting, sgraffito & sugar firing.

March 17: Sawing Copper Participants will saw their copper necklace to be used in the final class.

March 24: Putting it all together Continue techniques and procedures to complete enameled necklace and all enameled artwork.

- Call 549-7373 or Facebook Messenger: [whitleycountycooperativeextensionfinearts](https://www.facebook.com/whitleycountycooperativeextensionfinearts) to register.
- Max students: 5
- For ages: 18 and up
- Registration opens January 30
- Materials Fee: \$45
- Instructor: Mawnie Belcher- Enameling  
Duane Baysinger-Sawing

Participants will learn the process of enameling, gradient effect, stenciling, sugar firing, wet packing, sawing, sgraffito & painting.

Enameling is the process of fusing glass to metal. Powdered glass is applied to a metal surface, then fired at 1500 degrees in the kiln. Each piece will go through multiple firings to create a beautiful, glossy finish. Participants will leave with one piece of jewelry on a sterling silver chain and 2-3 additional enameled pieces.



Register at:  
[ukywhitley.pacecommunity.net](http://ukywhitley.pacecommunity.net)



# Winter Angel

## Using Acrylic Paint & Palette Knife

Friday, February 10

- 5:30p.m.-7:30p.m.
- Registration opens January 16
- Class Fee: \$5.00
- Instructor: Kathy Lay

- Call 549-7373 or Facebook Messenger: [whitleycountycooperativeextension-finearts](https://www.facebook.com/whitleycountycooperativeextension-finearts) to register.
- Max students: 20
- For ages: 13 and up



In this workshop, participants will complete a beautiful, impressionistic angel in acrylic paint on canvas. Participants will learn how to mix colors. They will learn basic drawing techniques, as well as how to blend and spread colors using a palette knife.

Register at:  
[ukywhitley.pacecommunity.net](http://ukywhitley.pacecommunity.net)

# Cathead Basket

• Friday, February 21 & 28 •

- 10:00a.m.-2:00p.m.
- Registration opens January 30
- Materials Fee: \$25.00
- Intermediate Basket (You must have completed 2 or more baskets)
- Instructor: Alice Fae Weiland

• Call 549-7373 or  
• Facebook Messenger:  
[whitleycountycooperative  
extension-finearts](#) to  
register.

• Max students: 10  
• For ages: 16 and up

In this basket class, participants will learn basket materials, tool and basic construction techniques. Participants will make their own handle in this class.



Register at:  
[ukywhitley.pacecommunity.net](http://ukywhitley.pacecommunity.net)

# 6-month Recap

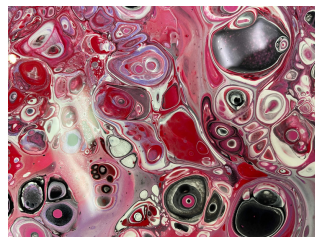
## Basket Workshops



# Mountain Textiles



# Acrylic Flip Pour



# Volunteer Forum



# Beginning Wheel Throwing



# Yoga



# Art Exhibit-Michael Hall



# Earth Day



# Arts Corner-Farmers Market



# 4-H Camp



# Jewelry Forging, Sawing and Tufa Casting





# Mixed Media Empathy Collage



# Origami Leather Wallet



# Art Exhibit

## Amanda "Ren" Elam

## Bart Jackson

## Kirstie Warren



# Arts in Community Series

## Advancing the Creative Economy

### Disaster Recovery for Arts Organizations: Damage Assessment, Claims and Relief Aid

[http://cedik.ca.uky.edu/files/arts\\_6\\_article\\_series\\_august\\_2022.pdf](http://cedik.ca.uky.edu/files/arts_6_article_series_august_2022.pdf)

---

### Community Arts Extension Program 2021 Annual Report

[https://cedik.ca.uky.edu/sites/cedik.ca.uky.edu/files/2021\\_arts\\_extension\\_annual\\_report.pdf](https://cedik.ca.uky.edu/sites/cedik.ca.uky.edu/files/2021_arts_extension_annual_report.pdf)

---

#### Arts Extension Strategic Initiatives

The following 3 core areas encompass the work of the Arts Extension Program:

#### Community & Economic Development

- Community Design/Creative Placemaking
- Enhancing the Creative Economy
- Arts & Community Health

#### Quality Arts Engagement

- High Quality Arts Engagement
- Increasing Access to Quality Arts Experiences
- Volunteer Recruitment & Development

#### Enhancing Essential Skills

- Direct Arts Programming
- Artistic Skill Development
- Essential Skill Development

# CEDIK Arts Engagement Resources

## Use Watercolor to make the state of Kentucky

[https://cedik.ca.uky.edu/files/kentucky\\_watercolor\\_ky\\_arts\\_extension\\_july2020.pdf](https://cedik.ca.uky.edu/files/kentucky_watercolor_ky_arts_extension_july2020.pdf)



## Use Natural Elements to make a Mindful Mandala

[https://cedik.ca.uky.edu/files/mindful\\_mandala\\_ky\\_arts\\_extension\\_may2020.pdf](https://cedik.ca.uky.edu/files/mindful_mandala_ky_arts_extension_may2020.pdf)



## Chalk Spray Paint

[https://cedik.ca.uky.edu/files/arts\\_enrichment\\_activity-chalk\\_spray\\_paint.pdf](https://cedik.ca.uky.edu/files/arts_enrichment_activity-chalk_spray_paint.pdf)



## Use Collage and Redaction to make Found Poetry

[https://cedik.ca.uky.edu/files/found\\_poetry\\_ky\\_arts\\_extension\\_july2020.pdf](https://cedik.ca.uky.edu/files/found_poetry_ky_arts_extension_july2020.pdf)



The College of Agriculture, Food and Environment is an Equal Opportunity Organization with respect to education and employment and authorization to provide research, education information and other services only to individuals and institutions that function without regard to economic or social status and will not discriminate on the bases of race, color, ethnic origin, creed, religion, political belief, sex, sexual orientation, gender identity, gender expression, pregnancy, marital status, genetic information, age, veteran status, or physical or mental disability. Inquiries regarding compliance with Title VI and Title VII of the Civil Rights Act of 1964, Title IX of the Educational Amendments, Section 504 of the Rehabilitation Act and other related matter should be directed to Equal Opportunity Office, College of Agriculture, Food and Environment, University of Kentucky, Room S-105, Agriculture Science Building, North Lexington, Kentucky 40546, the UK Office of Institutional Equity and Equal Opportunity, 13 Main Building, University of Kentucky, Lexington, KY 40506-0032 or US Department of Agriculture, Office of the Assistant Secretary for Civil Rights, 1400 Independence Avenue, SW, Washington, D.C. 20250-9410.



---

All Classes, unless listed otherwise, will be held at:  
Whitley County Extension Community Art Center,  
428 Main Street  
Williamsburg, Kentucky 40769  
606-549-7373



Like us on Facebook at [www.facebook.com/Whitleycountycooperativeextension-finearts](http://www.facebook.com/Whitleycountycooperativeextension-finearts)

---

Program Assistant for  
Fine Arts Ed.  
Mawnie.belcher@uky.edu



Mawnie Belcher

Extension Agent for Fine Arts Education  
Cortney.moses@uky.edu



Cortney Moses

Sustainable Agriculture  
and Nutrition Ed Assistant  
Andrea.munoz@kysu.edu



Andrea Munoz

Don't forget about our many services at our Goldbug location!  
Whitley County Extension Office  
4275 US-25W, Williamsburg, KY 40769  
606-549-1430

Family and Consumer Sciences

Agent, Linda Burgard: [Linda.burgard@uky.edu](mailto:Linda.burgard@uky.edu)  
FCS Program Assistant, Reagan Weedman: [Reagan.weedman@uky.edu](mailto:Reagan.weedman@uky.edu)

4-H Youth Development

Agent, Lisa Spaulding-Jones: [lisa.jones@uky.edu](mailto:lisa.jones@uky.edu)  
4-H Program Assistant, Brittany Browning: [Brittany.browning@uky.edu](mailto:Brittany.browning@uky.edu)

Agriculture and Natural Resources

Agent, Stacy White: [sjwhite@email.uky.edu](mailto:sjwhite@email.uky.edu)

Horticulture

Agent, Ben Prewitt: [Ben.prewitt@uky.edu](mailto:Ben.prewitt@uky.edu)  
Agriculture and Horticulture  
Program Assistant, Andrew Modica: [Andrew.modica@uky.edu](mailto:Andrew.modica@uky.edu)

Expanded Food and Nutrition Education Program (EFNEP)

Program Assistant, Cheryl Owens: [cheryl.owens@uky.edu](mailto:cheryl.owens@uky.edu)

Staff Assistant

Tina Noe, [Tina.noe@uky.edu](mailto:Tina.noe@uky.edu)

Staff Assistant

Rebecca Meadows, [Rebecca.Meadows@uky.edu](mailto:Rebecca.Meadows@uky.edu)

Maintenance/Custodian

Nathan Russel, [Billy.Russell@uky.edu](mailto:Billy.Russell@uky.edu)